

AP European History
Chapter 10: 1640-1669
Section 8: 1660-1669
Innovative History
By Dallin F. Hardy

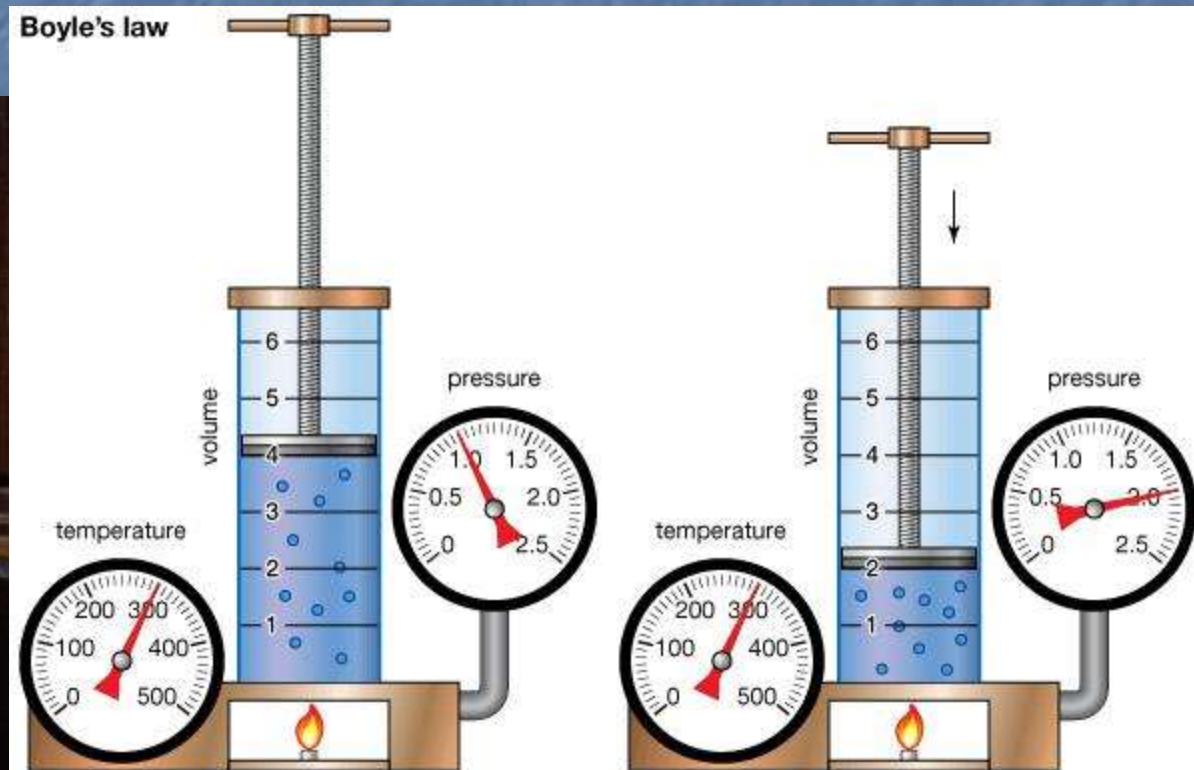
Scientific Societies

- Royal Society of London
 - 1660



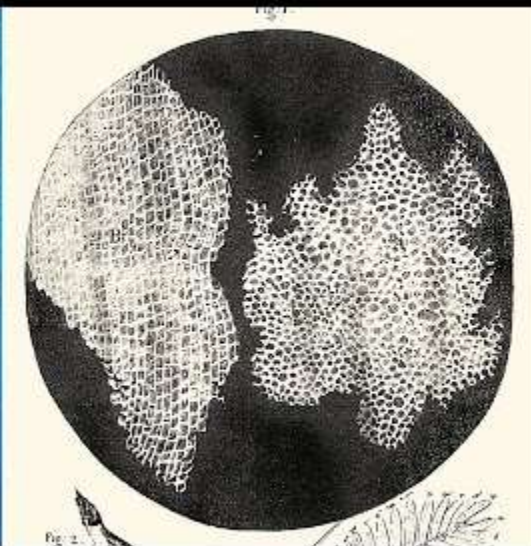
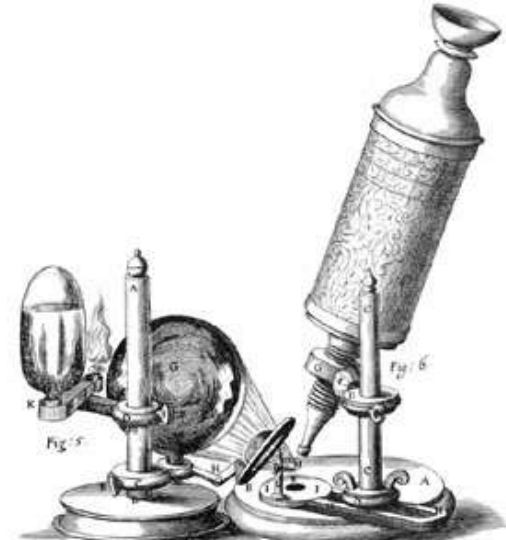
Scientific Revolution

- Boyle's Law
 - 1660
 - Robert Boyle



Biology

- Discovery of the Cell
 - 1665
 - Robert Hooke



Mercantilism

- French East India Company
 - 1664



Scientific Societies

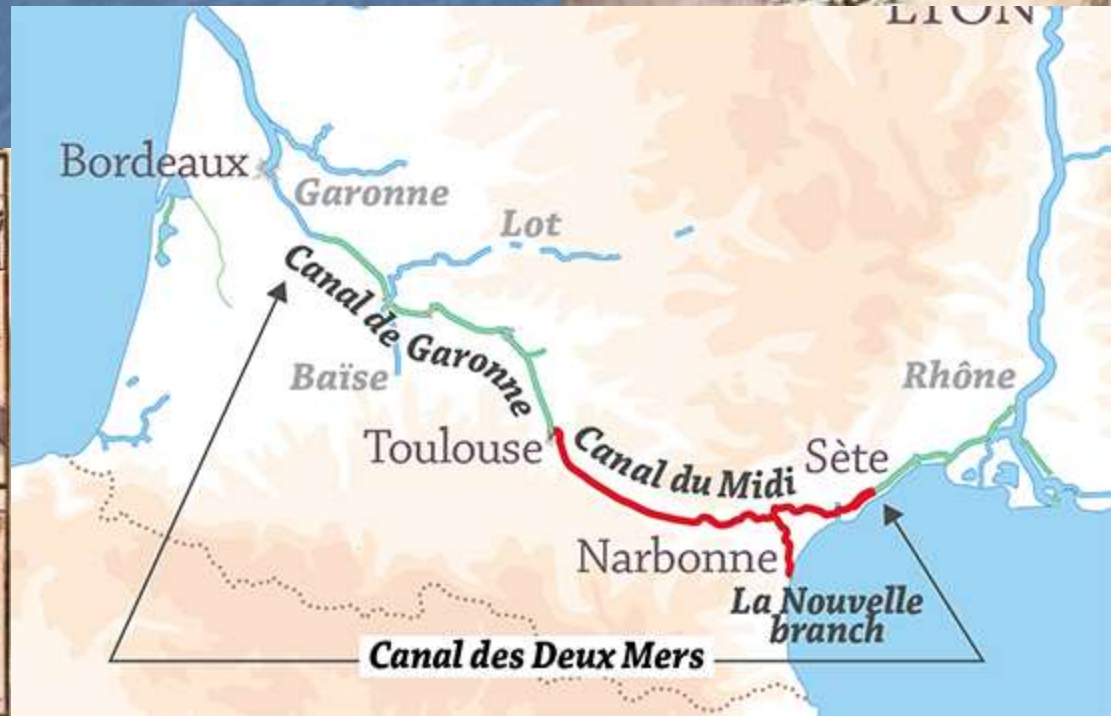
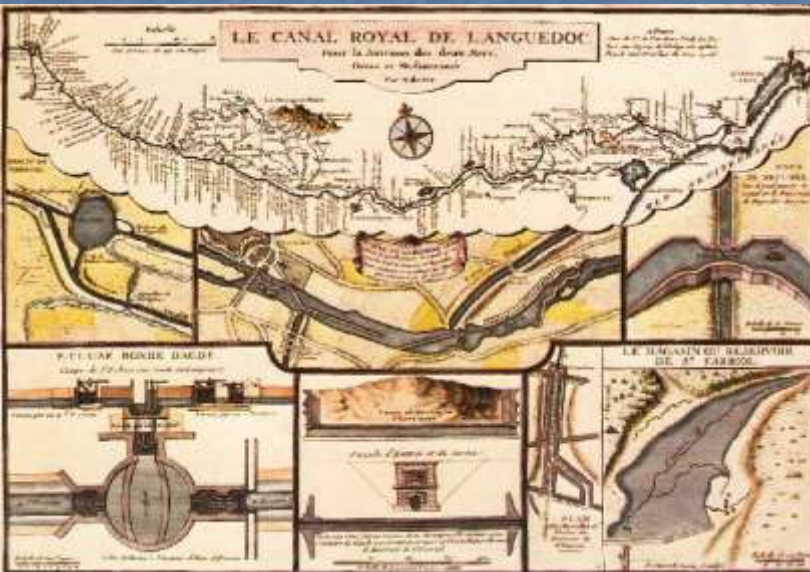
- French Academy of Sciences
 - 1666



Engineering



- Construction Begins on Canal du Midi
 - 1666
 - Pierre-Paul Riquet



THE HISTORY CHANNEL PRESENTS

GREAT PYRAMID

ENGINEERING

AN EMPIRE.

THE COMPLETE SERIES

EDGE-SECTION
BY THIBAUD
THOMAS BARLIER

ROMAN COLISEUM



THE HISTORY CHANNEL

DVD
VIDEO

